



PRODUCT PROFILE

FactoryTalk[®] View Machine Edition

MACHINE-LEVEL HMI FOR MACHINES AND SMALL PROCESSES

Harnessing the valuable information coming from your plant floor starts at the machine level. To maximize the usefulness of this information for monitoring and controlling your systems, software must scale across multiple platforms and offer development features that streamline deployment. FactoryTalk View[®] Machine Edition accomplishes these goals with a machine-level HMI product for developing and supporting PC-based and embedded operator interface solutions. We've designed it as a monitoring and control system for your machines and small processes and have created numerous features to greatly simplify development.

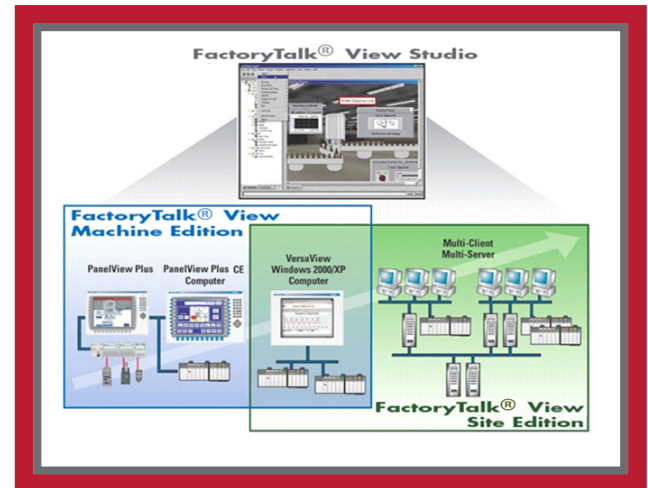
THE BENEFITS OF A FEATURE-RICH MACHINE-LEVEL SOFTWARE SOLUTION

Scalability – Makes it easy to reuse components of machine-level applications within supervisory-level projects.

- The FactoryTalk Machine Edition Station system runs on PanelView[™] Plus, PanelView[™] Plus CE, as well as VersaView[®] industrial computers and desktop computers running Windows operating systems.
- Shares a common FactoryTalk[®] service oriented architecture providing excellent capability to integrate with the Allen-Bradley[®] ControlLogix[®] platform.
- FactoryTalk Machine Edition is part of the FactoryTalk Enterprise Series, which offers a scalable HMI architecture. FactoryTalk View Machine Edition includes FactoryTalk[®] Studio, a development system for creating HMI projects, and FactoryTalk[®] Machine Edition Station, for running the projects created on the development system.

TAGLESS HMI WITH THE FACTORYTALK DIRECTORY

FactoryTalk[®] Directory gives you access to tags held in controllers by referencing them through a common address book. Tags defined in RSLogix[™] programming software and referenced via RSLinx[®] communications software, for example, are automatically available for browsing and accessing in a local directory. With FactoryTalk Directory, there's no need to recreate or import tags into a separate tag database.



THE POWER OF FACTORYTALK INTEGRATION: PERFORMANCE AND VISIBILITY WHERE YOU NEED THEM TO DRIVE SUCCESS

OPTIMIZED CONTROLLOGIX COMMUNICATIONS USING FACTORYTALK LIVE DATA

FactoryTalk View Machine Edition provides premier integration with Rockwell Automation products. For example, RSLinx Enterprise communications offer native, optimized communications to Logix platforms. Enabled by FactoryTalk Directory, FactoryTalk View Machine Edition allows browsing to a local directory for RSLogix tag addresses and directly accessing controller tags.

FactoryTalk View Machine Edition supports KepServer[™] Enterprise software, which provides serial and Ethernet OPC servers that allow communication between many third-party programmable controllers, industrial devices and FactoryTalk View Machine Edition.

FACTORYTALK SECURITY

FactoryTalk[®] Security provides security services integrated into both the FactoryTalk local directory and the FactoryTalk network directory.

FactoryTalk Security supports security policies that govern how security is implemented; for example, rules that determine how many characters passwords must contain and how complex passwords must be defined as security policies.

FactoryTalk View Machine Edition gives the option of creating different private user accounts with separate runtime access privileges. FactoryTalk View Studio, FactoryTalk Security users and groups can be assigned to individual private accounts, which include user name, password, login and logout macros, and a list of security codes associated with the account. In the FactoryTalk View Machine Edition Station system, users can open only the graphic displays that they are authorized to open, based on the security codes defined in the user accounts. Custom animations on objects or groups of objects can also be configured using expressions based on security access levels.

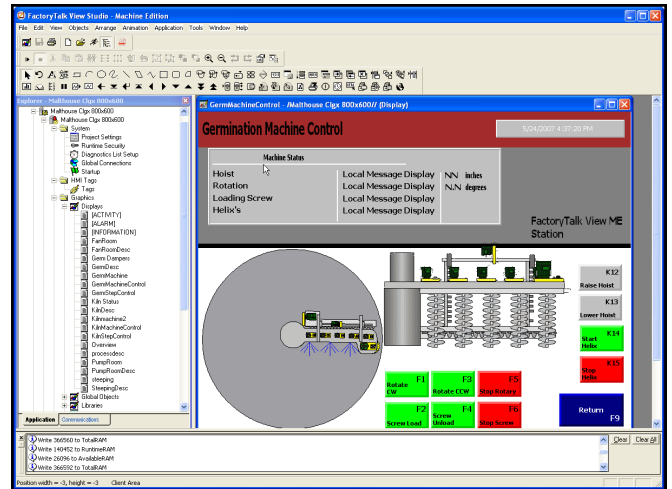
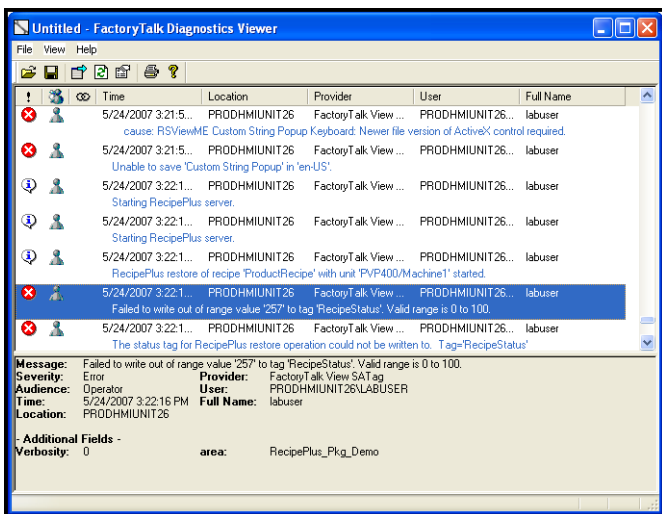
FactoryTalk View Machine Edition can also integrate with Microsoft® Windows® security using Windows-linked user or group accounts that are managed and authenticated by Windows. User names and passwords entered from the PanelView Plus, PanelView Plus CE, and Windows XP/Windows 2000 platforms are validated against Windows users and groups.

FACTORYTALK DIAGNOSTICS: COMMON REPOSITORIES FOR SYSTEM DIAGNOSTICS AND AUDIT MESSAGES

All FactoryTalk-enabled products use FactoryTalk® Diagnostics as the service to record and store messages generated by the system. These messages include:

- System messages and errors
- Communication network errors
- Tag read and write activity
- Operator activity

Diagnostics messages can be viewed using a diagnostics list of graphic objects, in either the default display or in a customized display. Diagnostics messages can be logged to a remote computer and viewed and printed using the FactoryTalk Diagnostics Viewer. FactoryTalk diagnostics messages can also be routed to FactoryTalk AssetCentre and RSMACC™ audit logs, offering a centralized repository and audit trail.



FACTORYTALK VIEW STUDIO: COMMON DEVELOPMENT ENVIRONMENT FOR SE AND ME

Simulate Runtime with Quick Test Run Capabilities
 To make it easy to test your systems as you build them, FactoryTalk View Studio includes a Quick Test Run feature and a time-limited runtime system. Quick Test Run operates from within the Graphics editor to verify operation of the objects and animations within the graphic. The full test run from FactoryTalk View Studio offers a time-limited runtime to check connectivity with RSLinx and OPC and allows the running of the complete application from within the development environment.

FACTORYTALK VIEW MACHINE EDITION: FEATURES RICH IN USABILITY AND SCALABILITY

RUNTIME APPLICATION CONVERSION – MER TO MED

You can now upload the application from the PanelView Plus or PanelView Plus CE and use those file for development. FactoryTalk View Machine edition runtime files (MER) can be converted back to the development files (MED) for editing in FactoryTalk View Studio.

SCALE MACHINE-LEVEL HMI APPLICATIONS ACROSS MULTIPLE PLATFORMS

FactoryTalk View Machine Edition expands the scope of traditional machine-level HMI development from dedicated devices to a much broader scale that includes open Windows CE solutions and Windows desktop operating systems.

MULTIPLE VERSION SUPPORT

FactoryTalk View Studio allows you to create runtime applications (MER files) for use with previous FactoryTalk View Machine Edition runtime versions. This provides the option of maintaining an installed base of older runtime versions and PanelView Plus and PanelView Plus CE terminals while using the latest FactoryTalk View Studio editor. This eliminates the time required to upgrade and re-qualify the runtime software or upgrade terminals to the latest firmware.

RUNTIME LANGUAGE SWITCHING

FactoryTalk View Enterprise, both FactoryTalk View Site Edition and FactoryTalk View Machine Edition, supports Runtime Language Switching of 20 runtime and 40 design-time languages giving you the ability to configure multiple language versions of an application with the capability of switching application languages dynamically at runtime. Text within alarm, local and information messages as well as text embedded in graphics objects can be translated easily using the string import/export to Excel feature that optimizes duplicate strings allowing a single translation for strings that appear multiple times in the application.



STREAMLINE HMI DEVELOPMENT

FactoryTalk View Studio, a common development environment, supports developing both machine-level and supervisory-level HMI applications. You can import entire machine-level applications into supervisory-level applications, and drag and drop individual components into supervisory projects.

MIGRATE PANELVIEW PROJECTS TO FACTORYTALK VIEW MACHINE EDITION

An automated “wizard” lets you import PanelView Standard and PanelView Enhanced projects into FactoryTalk View Machine Edition applications via FactoryTalk View Studio. The process successfully retains most of a PanelView project, including graphic displays and most objects, text, tags, alarm messages, and local and global messages.

GLOBAL OBJECTS

Global objects save development time by providing the capability to link the appearance and behavior of a base graphic object to multiple references of the object throughout a FactoryTalk View application. New Global Object parameters allow the creation of re-usable parameterized faceplates and templates. Enhanced usability comes with the ability to deploy faceplates and templates at design time, with the ability to substitute the parameterized element with top-level UDT tag support.

DETERMINE PANELVIEW PLUS AND PANELVIEW PLUS CE RUNTIME MEMORY USAGE WITH MEMORY TOOLS

You can now determine how much memory is used by your application on the PanelView Plus using two tools.

At design time, addition global connections have been added to report the memory used by FactoryTalk View Machine Edition and globally by the system. You can add trends or displays to be able to view this information at runtime on the terminal.

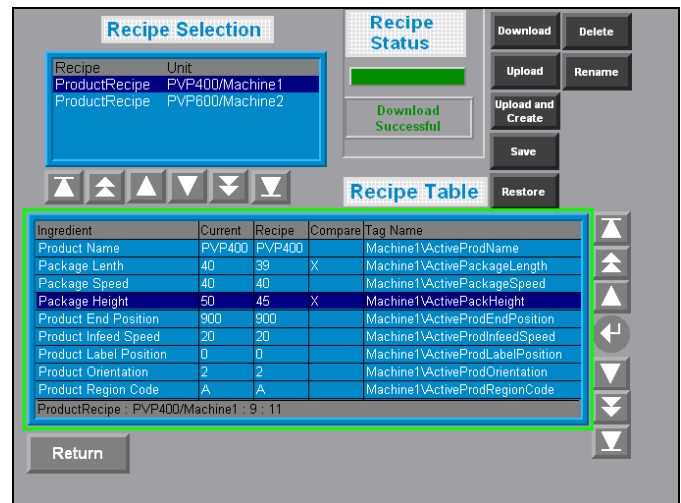
At runtime, you can view the memory in use without changing the runtime application. Terminal settings have been added that allow you to temporarily display in a small pop-up window the runtime memory used by the application. After you have confirmed the max application memory usage, you can disable the setting, returning to normal operation.

RECIPEPLUS

Use RecipePlus to configure multiple recipe files and easily transfer a set of data values to and from your automation equipment in a single operation. RecipePlus provides a convenient method for machine setup, managing production line changes or basic batch applications requiring variable parameters to be transferred to and from the controller.

Recipe files can be part of the HMI project or stored on an external device such as a compact flash card or server. RecipePlus Editor supports up to 15,000 ingredients, 500 data sets, 50 tag sets and 2,500 units, all arranged in an easy-to-use spreadsheet editor.

A single configurable recipe button object allows the user to upload, download, restore, upload and create, save, delete and rename a recipe unit.



CONFIGURE AND MONITOR ALARM CONDITIONS

The FactoryTalk View alarm system quickly alerts you and your operators to conditions requiring immediate action. You can use the Alarm Setup editor to configure alarm conditions. When an

alarm condition occurs during runtime, the system can pop up a predefined display, sound an alarm signal (Windows XP or Windows 2000 only), or send the alarm to a printer. Alarm system features include:

- Word alarm triggers based on analog tags, digital tags, or expressions
- Bit and least-significant bit alarm triggers
- Ability to acknowledge, silence, and clear alarms

FACTORYTALK SERVICES PLATFORM

The FactoryTalk® Services Platform is the foundation of the FactoryTalk Integrated Production and Performance Suite. It is a flexible solution consisting of activation procedures, a common address book, centralized authentication and access control, and uniform diagnostics that can help reduce costs and extend the life cycle of your existing investments.

GET ANSWERS FAST

When you purchase any product in the FactoryTalk View Machine Edition family, you receive both industry-leading software, and award-winning global support. Use the MySupport feature to personalize our Support Services Web site for your needs. MySupport can send you regular e-mail messages with links to the latest technical notes and software updates for FactoryTalk View Machine Edition and other products. To register, visit <http://support.rockwellautomation.com>.

GET MORE INFORMATION

For ordering information, contact your local Rockwell Automation sales office or Allen-Bradley distributor. Or learn more by visiting <http://www.rockwellsoftware.com>.

FactoryTalk Services Platform							
The FactoryTalk® Services Platform delivers value. It is a shared set of common features that enables superior interoperability and commonality between applications for reduced engineering, operations and training costs, while extending the life of existing investments. The FactoryTalk Services Platform provides a solid foundation for today and a path for the future.							
	Activation	Directory	Security	Diagnostics	Audit	Live Data	Alarms & Events
FactoryTalk View ME	✓	✓	✓	✓	✓	✓	

Allen-Bradley, CompactLogix, ControLogix, FlexLogix, MicroLogix, FactoryTalk, FactoryTalk Diagnostics, MobileView, PanelView, PanelView Plus, PLC, PLC-5, RSLinx, RSLogix, RSMACC, SLC and VersaView are trademarks of Rockwell Automation, Inc.

All other trademarks and registered trademarks are the property of their respective owners.

www.rockwellautomation.com

Power, Control and Information Solutions Headquarters

Americas: Rockwell Automation, 1201 South Second Street, Milwaukee, WI 53204-2496 USA, Tel: (1) 414.382.2000, Fax: (1) 414.382.4444

Europe/Middle East/Africa: Rockwell Automation, Vorstlaan/Boulevard du Souverain 36, 1170 Brussels, Belgium, Tel: (32) 2 663 0600, Fax: (32) 2 663 0640

Asia Pacific: Rockwell Automation, Level 14, Core F, Cyberport 3, 100 Cyberport Road, Hong Kong, Tel: (852) 2887 4788, Fax: (852) 2508 1846