

NETWORKS

STRATIX 6000 MANAGED ETHERNET SWITCHES



GAIN CONTROL OF YOUR ETHERNET NETWORK

Maximise your network uptime and overall productivity by monitoring network status through the control system.

With the Allen-Bradley Stratix 6000 Managed Switches, you now have real-time access to critical network data through your Logix-based control system. Stratix 6000 Entry Level Managed Switches make EtherNet/IP installations easy to commission, with the switch appearing as standard I/O, seamlessly integrating into Logix programs and updating tags automatically. This allows you to continuously monitor your network for configuration changes, traffic overload, and unauthorised access – and proactively implement changes to prevent a significant reduction in performance or unplanned downtime event.



The Stratix 6000 Switches feature minimum configuration and maximum functionality.

- Web-based configuration utility
- User manual embedded in firmware
- Four and eight Ethernet ports
- 8 to 48 VDC
- Port mirroring
- Combine the Ethernet switches modules with a Logix controller to:
 - Identify and restrict unauthorised users
 - Monitor traffic levels port by port
 - Identify network configuration changes

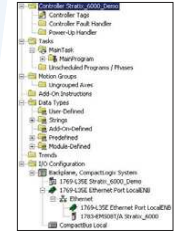
Stratix 6000 Managed Switch		
Description		Catalogue No.
4-port managed switch	Does not support an SFP uplink	1783-EMS04T
8-port managed switch with 1 fibre SFP port	Will support 1783-SFP1GSX or 1783-SFP1GLX	1783-EMS08T
1000 Mbit connectivity over multi-mode fibre (supports cable lengths up to 550m)	Same as used with Stratix 8000	1783-SFP1GSX
1000 Mbit connectivity over single mode fibre (supports cable lengths up to 10km)	Same as used with Stratix 8000	1783-SFP1GLX

NETWORKS

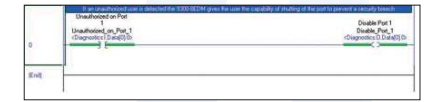
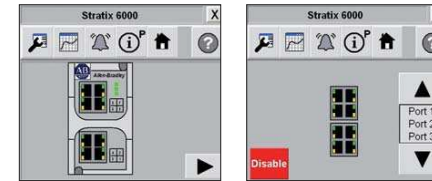
STRATIX 6000 MANAGED ETHERNET SWITCHES

CONNECTIVITY TO LOGIX CONTROLLERS

The Stratix 6000 easily integrates with Logix controllers. When the switch is installed in the I/O configuration, the controller automatically scans and identifies it (figure 1). Once the switch is identified, network status is easily viewed in ladder logic (figure 2) and is automatically updated in tags (figure 3).



(figure 1)



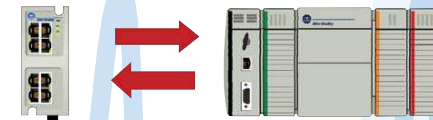
(figure 2)

Tag	Type	Value	Unit	Display	Units
Stratix_6000C	Bool	True		True	Stratix_6000C
Stratix_6000I	Bool	True		True	Stratix_6000I
Stratix_6000S	Bool	True		True	Stratix_6000S
Stratix_6000E1	Bool	True		True	Stratix_6000E1
Stratix_6000E2	Bool	True		True	Stratix_6000E2
Stratix_6000E3	Bool	True		True	Stratix_6000E3
Stratix_6000E4	Bool	True		True	Stratix_6000E4
Stratix_6000E5	Bool	True		True	Stratix_6000E5
Stratix_6000E6	Bool	True		True	Stratix_6000E6
Stratix_6000E7	Bool	True		True	Stratix_6000E7
Stratix_6000E8	Bool	True		True	Stratix_6000E8

(figure 3)

Inputs:

- Unauthorised MAC ID
- Traffic variation alarms
- Link active on port
- Multicast connections
- TCP connections
- Scaled bandwidth per port



Outputs:

- Disable communications to all ports
- Disable communications to a single port

Specifications

ENVIRONMENT	
Operating Temperature	0 to 60°C (32 to 152°F)
Storage Temperature	-20 to 70°C (-4 to 158°F)
COMPLIANCE	
UL/CUL Certified, ODVA EtherNet/IP Conformance Tested	
POWER REQUIREMENTS	
8 to 48VDC (230mA @ 24VDC typical, 300mA @ 24VDC max)	
NETWORK PORTS	
8 RJ-45 10/100 full/half duplex ports	
PROTOCOLS	
TCP/ IP, EtherNet/IP, Telnet, Http, DHCP, Bootp, FTP, IGMP	
ETHERNET/IP FEATURES MAC ID	
Management, Bandwidth Alarming, Port Control, Link Status, Scaled Bandwidth Information, Connections Active	
OTHER SWITCH FEATURES VLAN	
IGMP Snooping, IGMP Query V1&V2, DHCP Server, Bootp Server, QoS, Port Mirroring	
DIMENSIONS	
2.0" x 4.5" x 3.5", 5.08cm x 11.43cm x 8.89cm	

ADDITIONAL

STRATIX ETHERNET SWITCHES TO CHOOSE FROM

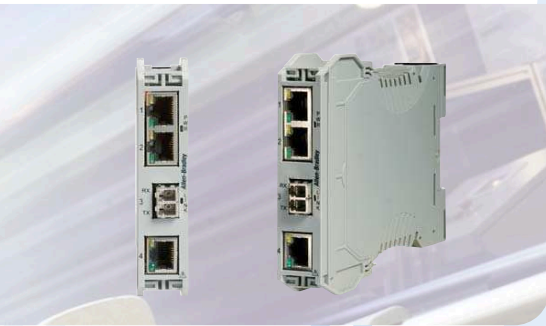


STRATIX 8000 MODULAR MANAGED SWITCHES:

This Rockwell Automation and Cisco integrated and co-branded industrial managed switch line is the first of its kind. The line uses the current Cisco Catalyst switch architecture and feature set, along with powerful configuration tools, helping to provide secure integration with the enterprise network and making IT professionals feel at home.

At the same time, it allows for easier set-up and comprehensive diagnostics from within the Rockwell Automation® Integrated Architecture™ offering similar configuration and faceplates to the Stratix 600 family for automation professionals.

In addition, the modular managed switch includes a removable compact flash card for one-step device replacement and default configurations for the manufacturing environment. Modular and industrially rated, the product line scales from six to 26 ports with options for copper and fibre to meet a variety of applications.



STRATIX EMBEDDED TECHNOLOGY FOR LINEAR & RING TOPOLOGIES:

Ethernet switch technology embedded directly into popular automation equipment – such as programmable automation controllers, distributed I/O and drives – to allow for better configuration choices for EtherNet/IP applications, such as daisy-chain and ring topologies.

The technology allows for high-performance ring capability (make/break < 1ms), complete with diagnostic and embeds key features for high performance EtherNet/IP applications usually found only in managed switches, without the need for configuration. These features include traffic prioritisation, fault-tolerance, IGMP snooping and cut-through. A standalone three-port module will be available with the initial release of products and will allow single port Ethernet devices to participate in the new topologies.



STRATIX 2000 UNMANAGED SWITCHES:

These are industrial grade products with four to eight ports that offer a variety of copper and fibre options. The unmanaged switches are easier to apply in some applications because they do not require any configuration. Products also are available for on-machine (IP67) applications.

STRATIX SWITCH REFERENCE CHART

	Managed						Embeded Switch Technology	Unmanaged				
	Stratix 6000™		Stratix 8000™					Stratix 2000™				
	1783-EMS04T	1783-EMS08T	1783-MS06T System Module	1783-MS10T System Module	1783-MX08T Expansion Module	1783-MX08F Expansion Module	1783-ETAP	1783-US03T01F	1783-US05T	1783-US06T01F	1783-US08T	1783-US08TZ
HARDWARE FEATURES												
Ports Per Module	4	9	6	10	8	8	3	4	5	7	8	8
Total Max Ports	-		Up to 26*				3	-				
Fiber Ports	-	1	2-10*				-	1	-	1	-	-
10/100 Copper Ports	4	8	4-24*				3	3	5	6	8	8
100 Base LC Fiber Ports	-		0-8*				-	1	-	1	-	-
SFP Slots	-	1	2**				-	-				
10/100/1000 Copper ports	-		2**				-	-				
100Mbps Fiber Support	-		✓				-	✓	-	✓	-	-
1G Fiber Support	-	✓	✓				-	-				
CompactFlash Memory	-		✓				-	-				
SOFTWARE FEATURES												
Cisco IOS	-		✓				-	-				
RSTLogix 5000 Add On Profile	✓		✓				✓	-				
VLAN	✓		✓ (with trunking)				✓	-				
QOS	✓		✓				✓	-				
Bandwidth Threshold Alarming	✓		✓				✓	-				
STP/RSTP or Ring Support	-		✓				✓	-				
MAC ID Port Security	✓		✓				-	-				
IP address assignment per port or option 82	✓		✓				-	-				
SNMP Support	-		✓				-	-				
Port Mirroring	✓		✓				✓	-				
Manual Configuration Speed	✓		✓				✓	-				
IEEE 802.1x Security	✓		✓				-	-				
IGMP Snooping and Query	✓		✓				✓	-				
EtherChannels	-		✓				-	-				
Smartports	-		✓				-	-				
SPECIFICATIONS												
Operating Temperature	0° - 60° C		-20° to 60° C				0° - 60° C	0° - 60° C				
Environmental Rating	IP20		IP20				IP20	IP20				
Dimensions	114m H		147mm H	147mm H			132mmH	108mm H	108mm H			210mm H
	51m H		152mm W	97mm W			56.7mmW	28mm W	45mmW			54mmW
	89m H		112mm D***	112mm D***			105.1mmD	127mm D	127mm D			32mmD
Power Requirements	8-48 VDC		24V/48 VDC				24 VDC	10-35 VDC				

For product availability or more detailed information refer to installation manuals or visit our website www.ab.com/networks/switches

* max port counts require expansion modules ** 2 ports each can be used for SFP or 10/100/1000 copper *** Modular product size will vary with expansion modules